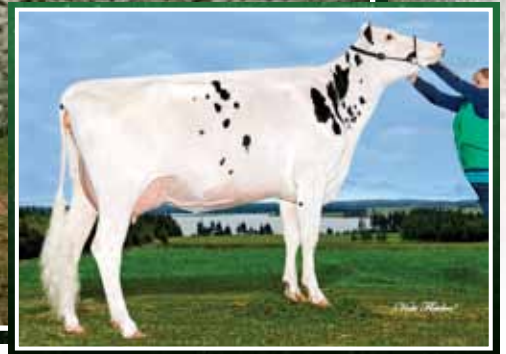


EASTSIDE LEWISDALE CELEBRATION



Cybil Fisher



Eastside Lewisdale Gold *Missy* EX-95 2E 8*
 Supreme Champion *Royal* & WDE 2011
 2nd Dam

Morsan Miss *Snow Angel* VG-86 2Yr
 Snowman from *Missy* herself
 Dam

LEWISDALE SS ANGELENA

HOCANF11623389 ET B:2013 Mar 06
 CAN-GPA Apr*14 68%Rel GPA LPI+2684/64%
 KG M+1555/96% F+76/99% %F+0.18
 SCS 2.79 P+52/98% %P+0.02
 CAN-GPA Apr*14 64%Rel Conf+6/85%
 MS+3 F&L+7 DS+3 R+4

4th Maternal Dam
 STADACONA PROGRESS ANIBEL VG-85-3YR-CAN 2*

Bred June 30, 2014 to Living

Consigned by:
 FRIZZELLS VALLEYVILLE FARM INC
 Tel: 902-964-3235 Fax: 902-964-3235
 LEWIS BROS
 Tel: 902-628-6549 Fax: 902-629-1558
 J. GUY THOMPSON & SON
 Tel: 902-629-5176 Fax: 902-892-2551

SEAGULL-BAY SUPERSIRE-ET PB

HOUSAM69981349 *CVF*BYF*BLF*DPF ET
 CAN-GPA Apr*14 73%Rel GPA LPI+3351/69%
 KG M+2533/99% F+121/99% %F+0.23
 SCS 2.88 P+90/99% %P+0.07
 CAN-GPA Apr*14 69%Rel Conf+8
 MS+6 F&L+6 DS+4 R+6

ROYLANE SOGRA ROBUST-ET PB

HOUSAM64966739 *CVF*RDF*BLF*DPF ET
 VG-88-3YR-USA
 GMACE Apr*14 90%Rel GMLPI+3293/85%
 KG M+2080 F+124 %F+0.42 P+84 %P+0.16
 GMACE Apr*14 85%Rel Conf+4

AMMON-PEACHEY SHAUNA-ET PB

HOUAF66228178 ET
 VG-87-2YR-USA DOM
 02-01 305 13390 543 4.1 429 3.2
 365 15930 647 4.1 519 3.3
 1 LACT: 17264 701 4.1 572 3.3 KG

VELVET-VIEW-KJ SOCRATES-ET PB

HOUSAM133126053 *CVF*RDF*BLF*DPF ET
 EX-94-5YR-USA GM*10

SEAGULL-BAY OMAN MIRROR-ET PB

HOUAF62115945 ET
 VG-86-3YR-USA DOM

ENSENADA TABOO PLANET-ET PB

HOUSAM60597003 *CVF*RDF*BYF*BLF*DPF ET
 EX-90-4YR-USA GM*11 EXTRA*12

PINE-TREE MARTHA SHEEN-ET PB

HOUAF62443682 ET
 VG-86-3YR-USA DOM 2*(0/11)

MORSAN MISS SNOW ANGEL PB

HOCANF11325113 ET B:2011 Jun 18
 VG-86-2YR-CAN
 MS:85(FA:8 RAH:8 RAW:7) F&L:86 DS:87 R:89
 CAN-GEVB Apr*14 75%Rel GLPI+2618/72%
 KG M+1138/89% F+55/96% %F+0.18
 SCS 2.82 P+39/93% %P+0.02
 CAN-GEVB Apr*14 71%Rel Conf+11/98%
 MS+7 F&L+11 DS+7 R+7
 02-02 P284 8863 404 4.6 279 3.1
 PBCA 220 268 216
 1 LACT: 8311 380 4.6 261 3.1 KG
 AVG BCA: M220 F268 P216

FLEVO GENETICS SNOWMAN PB

HONLDM388965513 *CVF*BLF
 EXTRA*14
 CAN-GEVB Apr*14 96%Rel GLPI+2996/91%
 KG M+2250 F+69 %F-0.04 P+71 %P-0.02
 CAN-GEVB Apr*14 92%Rel Conf+12

EASTSIDE LEWISDALE GOLD MISSY PB

HOCANF7808378 ET
 EX-95-2E-CAN 8*(6/38)
 03-01 305 14331 632 4.4 457 3.2
 308 14441 638 4.4 461 3.2
 BCA 323 385 322
 05-00 305 16208 678 4.2 514 3.2
 BCA 318 363 323
 4 LACT: 66318 3024 4.6 2207 3.3 KG
 AVG BCA: M300(+51) F364(+110) P306(+56)
 2 Super3's, 4 Superior Lactations
 ALL-AMERICAN 5-YR, JR. 3-YR, JR. 2-YR
 ALL-CANADIAN 5-YR, JR. 2-YR
 GRAND 2011 ROYAL
 GRAND 2011 MADISON
 RES. INT. 2009 MADISON
 1ST LONGTIME PROD 2013 ROYAL
 Progeny Data: 0EX 23VG 3GP 0G 0F
 26 DAUS ME AVG: 13410 568 4.2 428 3.2
 AVG BCA: M253 F291 P259

O-BEE MANFRED JUSTICE-ET PB

HOUSAM122358313 *CVF*RDF*BLF*DPF ET
 EX-94-7YR-USA SP*07 GM

BROEKS MBM ELSA PB

HONLDF381135900 ET
 EX-90-5YR-NLD 4*(15/8)

BRAEDALE GOLDWYN PB

HOCANM10705608 *CVF*BYF*BLF
 GP-84-8YR-CAN EXTRA*05 GM*12

STADACONA OUTSIDE ABEL PB

HOCANF8077661
 VG-88-4YR-CAN 33*(15/150)
 03-03 305 14753 696 4.7 432 2.9
 365 16601 769 4.6 496 3.0
 BCA 317 407 292
 3 LACT: 48588 2017 4.2 1480 3.0 KG
 AVG BCA: M276(+73) F310(+97) P256(+52)
 1 Superior Lactation
 HM. ALL-ATLANTIC INT. 1-YR 2001
 1ST INT. CALF 2000 DRUMMOND
 Progeny Data: 11EX 24VG 3GP 0G 0F
 38 DAUS ME AVG: 13054 506 3.9 397 3.0
 AVG BCA: M247 F259 P240

EASTSIDE LEWISDALE CELEBRATION



Patty Jones

Morsan Miss Represented VG-87 2Yr
 2nd Sr. 2-Yr-Old Vancouver Island 2013
 2nd Dam

Eastside Lewisdale Gold Missy EX-95 2E 8*

Supreme Champion *Royal* & WDE 2011
 3rd Dam



STANHOPE BRAXTON MISSY

HOCANF11377618 ET B:2012 Sep 19
 CAN-PA Apr*14 44%Rel PA LPI+2354/42%
 KG M+1006/85% F+46/92% %F+0.10
 SCS 3.05 P+23/77% %P-0.08
 CAN-PA Apr*14 43%Rel Conf+12/99%
 MS+8 F&L+11 DS+11 R+8

4th Maternal Dam
 STADACONA PROGRESS ANIBEL VG-85-3YR-CAN 2*

Due August 2014

Consigned by:
 LEWIS BROS
 Tel: 902-628-6549 Fax: 902-629-1558
 J. GUY THOMPSON & SON
 Tel: 902-629-5176 Fax: 902-892-2551

REGANCREST S BRAXTON-ET PB

HOUSAM61898423 *CVF*RDF*BYF*BLF*DPF ET
 EX-95-5YR-USA ST13
 CAN-GEV Apr*14 99%Rel GLPI+2055/97%
 KG M+1755/95% F+21/51% %F+0.38
 SCS 3.10 P+23/60% %P-0.29
 CAN-GEV Apr*14 98%Rel Conf+11/98%
 MS+6 F&L+8 DS+17 R+9
 Progeny Data: 2074 Daus: 81% GP+
 0EX 391VG 1281GP 392G 10F
 1691 DAUS ME AVG: 12294 446 3.6 365 3.0
 AVG BCA: M232 F228 P221

PICSTON SHOTTLE-ET PB

HOGBRM598172 *CVF*BYF*BLF*MPF ET
 EX-96-7YR-GBR EXTRA'09 GM'10
 CAN-GEV Apr*14 99%Rel GLPI+2472/99%
 KG M+993 F+38 %F+0.02 P+28 %P-0.04
 CAN-GEV Apr*14 99%Rel Conf+9
REGANCREST-PR BARBIE-ET PB
 HOUSAF60602011 *CVF ET
 EX-92-7YR-USA DOM GMD 6*(0/32)
 02-06 305 12120 478 3.9 401 3.3
 365 14374 561 3.9 476 3.3
 2 LACT: 32282 1221 3.8 1049 3.2 KG

CAROL PRELUDE MTOTO ET PB

HOITAMVT19624 *CVF*BLF ET
 EX-91-8YR-ITA GM'12
CONDON AERO SHARON PB
 HOCANF5373153
 EX-91-6YR-GBR
REGANCREST ELTON DURHAM-ET PB
 HOUSAM2250783 *CVC*RDF*BLF ET
 EX-90-7YR-USA GM
REGANCREST JUROR BRINA-ET PB
 HOUSAF17014963 ET
 EX-92-4YR-USA GMD

MORSAN MISS REPRESENTED PB

HOCANF11099584 ET M B:2010 Oct 02
 VG-87-2YR-CAN
 MS:87(FA:7 RAH:8 RAW:8) F&L:89 DS:86 R:88
 CAN-GEV Apr*14 75%Rel GLPI+2693/72%
 KG M+258/51% F+71/99% %F+0.59
 SCS 3.00 P+23/77% %P+0.13
 CAN-GEV Apr*14 72%Rel Conf+13/99%
 MS+11 F&L+14 DS+4 R+7
 02-05 305 9823 463 4.7 340 3.5
 365 11394 541 4.7 399 3.5
 BCA 236 301 258
 1 LACT: 13548 657 4.8 483 3.6 KG
 AVG BCA: M236(-8) F301(+56) P258(+17)
 2ND SR.2-YR 2013 VANCOUVER ISLAND

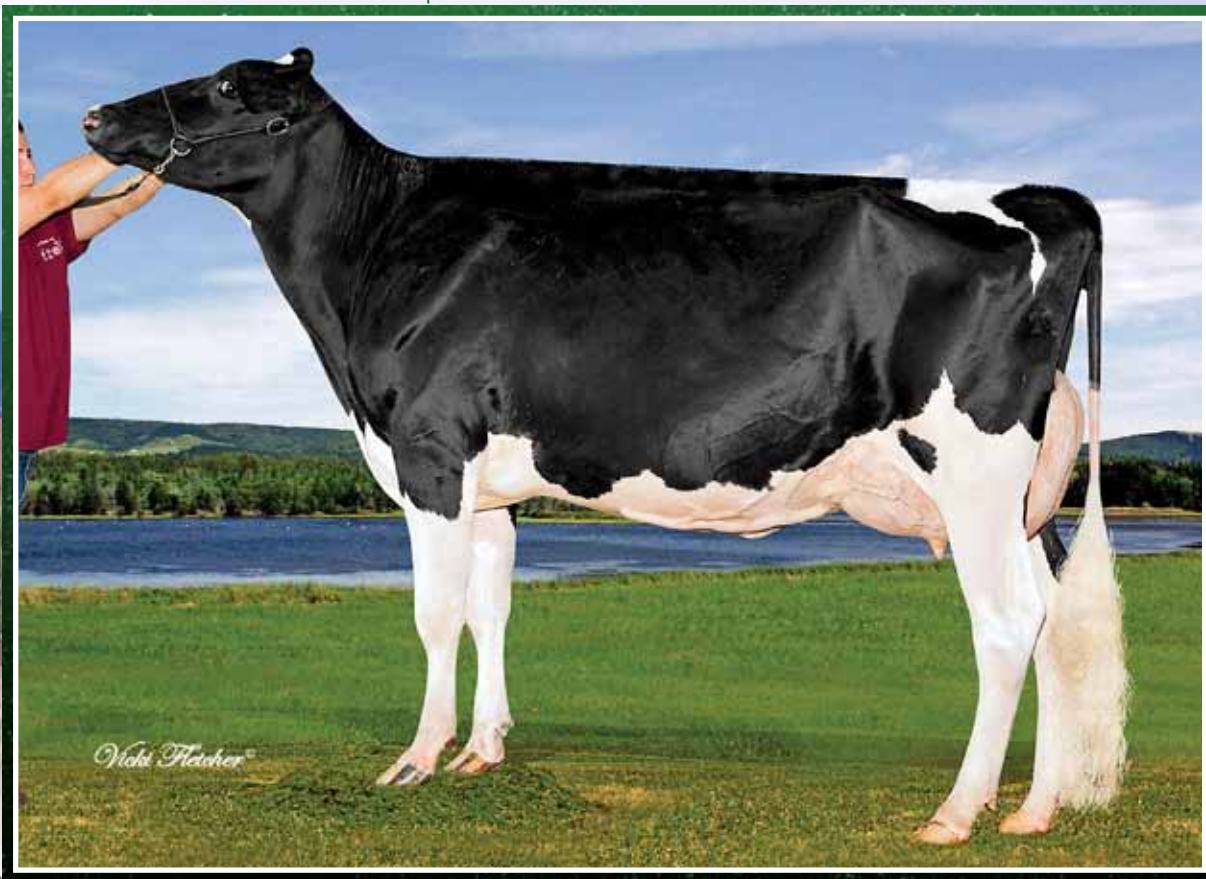
GOLDEN-OAKS ST ALEXANDER-ET PB

HOUSAM61133837 *CVF*RDF*BYF*BLF*DPF ET
 EX-94-8YR-USA ST'12
 CAN-GEV Apr*14 99%Rel GLPI+2406/99%
 KG M+544 F+65 %F+0.43 P+15 %P-0.02
 CAN-GEV Apr*14 99%Rel Conf+7
EASTSIDE LEWISDALE GOLD MISSY PB
 HOCANF7808378 ET
 EX-95-2E-CAN 8*(6/38)
 03-01 305 14331 632 4.4 457 3.2
 308 14441 638 4.4 461 3.2
 BCA 323 385 322
 05-00 305 16208 678 4.2 514 3.2
 BCA 318 363 323
 4 LACT: 66318 3024 4.6 2207 3.3 KG
 AVG BCA: M300(+51) F364(+110) P306(+56)
 2 Super3's, 4 Superior Lactations
 ALL-CANADIAN 5-YR 2011
 ALL-AMERICAN 5-YR 2011
 GRAND 2011 ROYAL
 GRAND 2011 MADISON
 RES.INT. 2009 MADISON
 1ST LONGTIME PROD 2013 ROYAL
 Progeny Data: 0EX 23VG 3GP 0G 0F
 26 DAUS ME AVG: 13410 568 4.2 428 3.2
 AVG BCA: M253 F291 P259

COMESTAR STORMATIC PB

HOCANM6947936 *CVF*BLF ET
 EX-CAN EXTRA'02
NEU-WAY PATRON ALLIE-ET PB
 HOUSAF17216847 *CVC*MPF ET
 VG-87-2YR-USA DOM GMD 2*(0/10)
BRAEDALE GOLDWYN PB
 HOCANM10705608 *CVF*BYF*BLF
 GP-84-8YR-CAN EXTRA'05 GM'12
STADACONA OUTSIDE ABEL PB
 HOCANF8077661
 VG-88-4YR-CAN 33*(15/150)
 03-03 305 14753 696 4.7 432 2.9
 365 16601 769 4.6 496 3.0
 BCA 317 407 292
 3 LACT: 48588 2017 4.2 1480 3.0 KG
 AVG BCA: M276(+73) F310(+97) P256(+52)
 1 Superior Lactation
 HM. ALL-ATLANTIC INT. 1-YR 2001
 1ST INT. CALF 2000 DRUMMOND
 Progeny Data: 11EX 24VG 3GP 0G 0F
 38 DAUS ME AVG: 13054 506 3.9 397 3.0
 AVG BCA: M247 F259 P240

EASTSIDE LEWISDALE CELEBRATION



Lewisdale Eastside *Amazement* VG-86 2Yr

Nom. All-Canadian Senior Yearling 2011 Nom. All-American Senior Calf 2010

Dam

LEWISDALE EASTSIDE ANATASHIA

HOCANF11788150 ET B:2013 Dec 09
 VG-87-2YR-USA ST*12
 CAN-PA Apr*14 PA LPI+2330
 KG M+675 F+12 %F-0.12
 SCS 2.84 P+8 %P-0.11
 CAN-PA Apr*14 Conf+15
 MS+12 F&L+12 DS+12 R+7

4th Maternal Dam
 STADACONA PROGRESS ANIBEL VG-85-3YR-CAN 2*

Consigned by:
 LEWIS BROS
 Tel: 902-628-6549 Fax: 902-629-1558
 J. GUY THOMPSON & SON
 Tel: 902-629-5176 Fax: 902-892-2551

MS ATLEES SHT AFTERSHOCK-ET PB
 HOUSAM65249839 *CVF*BYF*BLF*DPF ET
 VG-87-2YR-USA ST*12
 CAN-GEBV Apr*14 99%Rel GLPI+2314/97%
 KG M+552/51% F+10/37% %F-0.09
 SCS 2.79 P+0/19% %P-0.15
 CAN-GEBV Apr*14 98%Rel Conf+16/99%
 MS+14 F&L+13 DS+13 R+7
 Progeny Data: 1186 Daus: 91% GP+
 2EX 413VG 659GP 109G 3F
 1149 DAUS ME AVG: 11576 441 3.8 354 3.1
 AVG BCA: M219 F226 P214

PICSTON SHOTTLE-ET PB
 HOGBRM598172 *CVF*BYF*BLF*MPF ET
 EX-96-7YR-GBR EXTRA'09 GM'10
 CAN-GEBV Apr*14 99%Rel GLPI+2472/99%
 KG M+993 F+38 %F+0.02 P+28 %P-0.04
 CAN-GEBV Apr*14 99%Rel Conf+9
MD-DELIGHT DURHAM ATLEE-ET PB
 HOUSAF131704103 ET
 EX-92-4YR-USA DOM GMD 7*(0/35)
 03-11 305 15286 869 5.7 492 3.2
 365 17368 948 5.5 567 3.3
 2 LACT: 35265 1746 5.0 1163 3.3 KG

CAROL PRELUDE MTOTO ET PB
 HOITAMVT1962A *CVF*BLF ET
 EX-91-8YR-ITA GM'12
CONDON AERO SHARON PB
 HOCANF5373153
 EX-91-6YR-GBR
REGANCREST ELTON DURHAM-ET PB
 HOUSAM2250783 *CVC*RDF*BLF ET
 EX-90-7YR-USA GM
MD-DELIGHT STRM AMBERLEE-ET PB
 HOUSAF128108550 ET
 VG-88-3YR-USA DOM

LEWISDALE EASTSIDE AMAZEMENT PB
 HOCANF9971612 ET B:2009 Sep 02
 VG-86-2YR-CAN
 MS:87(FA:8 RAH:9 RAW:7) F&L:85 DS:86 R:84
 CAN-EBV Apr*14 54%Rel LPI+2346/50%
 KG M+797/778% F+13/55% %F-0.14
 SCS 2.89 P+16/66% %P-0.07
 CAN-EBV Apr*14 50%Rel Conf+13/99%
 MS+10 F&L+11 DS+10 R+6
 02-06 115 5178 218 4.2 158 3.1
 1 LACT: 5178 218 4.2 158 3.1 KG
 NOM. ALL-CANADIAN SR.1-YR 2011
 NOM. ALL-AMERICAN SR.CALF 2010
 HM.JR. 2011 QC INTERNATIONAL
 1ST SR.1-YR 2011 QC INTERNATIONAL
 2ND SR.CALF 2010 MADISON
 HM.JR. 2011 VICTORIAVILLE
 Progeny Data: 0EX 1VG 0GP 0G 0F
 1 DAUS ME AVG: 13021 541 4.2 466 3.6
 AVG BCA: M246 F277 P282

GEN-MARK STMATIC SANCHEZ PB
 HOUSAM134422312 *CVF*RDF*BYF*BLF*DPF
 EX-94-6YR-USA ST*12
 CAN-GEBV Apr*14 99%Rel GLPI+2174/99%
 KG M+706 F-11 %F-0.34 P+14 %P-0.09
 CAN-GEBV Apr*14 99%Rel Conf+13
LEWISDALE EASTSIDE GOLD AMAZE PB
 HOCANF7789807 *CVF*BYF*BLF*DPF ET
 VG-87-2YR-CAN 4*(6/14)
 02-04 305 9478 377 4.0 307 3.2
 365 10948 437 4.0 358 3.3
 BCA 236 253 240
 1 LACT: 13648 543 4.0 455 3.3 KG
 AVG BCA: M236(+48) F253(+44) P240(+49)
 3RD SR.2-YR 2008 ATLANTIC CHAMP.
 Progeny Data: 1EX 10VG 4GP 1G 0F
 15 DAUS ME AVG: 12862 487 3.8 391 3.0
 AVG BCA: M243 F250 P236

COMESTAR STORMATIC PB
 HOCANM6947936 *CVF*BLF ET
 EX-CAN EXTRA'02
GEN-MARK BW MAR WINNIE-ET PB
 HOUSAF131652910 ET
 EX-90-2E-USA GMD 1*(5/3)
BRAEDALE GOLDWYN PB
 HOCANM10705608 *CVF*BYF*BLF
 GP-84-8YR-CAN EXTRA'05 GM'12
STADACONA OUTSIDE ABEL PB
 HOCANF8077661
 VG-88-4YR-CAN 33*(15/150)
 03-03 305 14753 696 4.7 432 2.9
 365 16601 769 4.6 496 3.0
 BCA 317 407 292
 3 LACT: 48588 2017 4.2 1480 3.0 KG
 AVG BCA: M276(+73) F310(+97) P256(+52)
 1 Superior Lactation
 HM. ALL-ATLANTIC INT.1-YR 2001
 1ST INT.CALF 2000 DRUMMOND
 Progeny Data: 11EX 24VG 3GP 0G 0F
 38 DAUS ME AVG: 13054 506 3.9 397 3.0
 AVG BCA: M247 F259 P240

EASTSIDE LEWISDALE CELEBRATION



Eastside Lewisdale Gold *Missy* EX-95 2E 8*
 Canadian Cow of the Year 2012
 Full Sister to the 2nd Dam

**Lewisdale Eastside
 Gold *Amaze* VG-87 2Yr 4***
 3rd Sr. 2-Yr-Old Atlantic Champ. Show 2008
 2nd Dam

LEWISDALE EASTSIDE UNO ALLIE

HOCANF12047699 B:2014 May 14
 CAN-PA Apr*14 PA LPI+2613
 KG M+579 F+35 %F+0.14
 SCS 2.75 P+24 %P+0.04
 CAN-PA Apr*14 Conf+12
 MS+10 F&L+11 DS+6 R+4

4th Maternal Dam
 STADACONA PROGRESS ANIBEL VG-85-3YR-CAN 2*

Consigned by:
 LEWIS BROS
 Tel: 902-628-6549 Fax: 902-629-1558
 J. GUY THOMPSON & SON
 Tel: 902-629-5176 Fax: 902-892-2551

AMIGHETTI NUMERO UNO ET PB
 HOITAM17990915143 *CVF*BYF*BLF*DPF ET
 CAN-GPA Apr*14 75%Rel GPA LPI+2928/72%
 KG M+463/46% F+63/94% %F+0.45
 SCS 2.68 P+33/78% %P+0.14
 CAN-GPA Apr*14 72%Rel Conf+11
 MS+11 F&L+11 DS+2 R+2
 Progeny Data: 9 Daus: 100% GP+
 0EX 2VG 7GP 0G 0F

LONG-LANGS OMAN OMAN-ET PB
 HOUSAM135746776 *CVF*BYF*BLF ET
 VG-85-4YR-USA GM'10 EXTRA'12
 CAN-GEBV Apr*14 98%Rel GLPI+2887/96%
 KG M+836 F+57 %F+0.28 P+66 %P+0.32
 CAN-GEBV Apr*14 97%Rel Conf+8
AMIGHETTI SHOTTLE AVE PB
 HOITAF17990346074 ET
 VG-89-ITA
 02-00 305 12894 531 4.1 452 3.5
 338 14008 579 4.1 494 3.5
 2 LACT: 28056 1100 3.9 936 3.3 KG

O-BEE MANFRED JUSTICE-ET PB
 HOUSAM122358313 *CVF*BYF*BLF*DPF ET
 EX-94-7YR-USA SP'07 GM
WINNING-WAY MARCI-ET PB
 HOUSAF130677626 *CVC ET
 VG-89-7YR-USA
PICSTON SHOTTLE-ET PB
 HOGBRM598172 *CVF*BYF*BLF*MPF ET
 EX-96-7YR-GBR EXTRA'09 GM'10
AMIGHETTI IRON ALUNDRA PB
 HOITAF17990048241 ET
 VG-89-4YR-ITA

EASTSIDE LEWISDALE SAN ALYSON PB
 HOCANF11137873 ET B:2011 Sep 02
 VG-86-2YR-CAN
 MS:85(FA:8 RAH:7 RAW:5) F&L:86 DS:89 R:85
 CAN-PA Apr*14 45%Rel PA LPI+2297/44%
 KG M+694/73% F+7/45% %F+0.17
 SCS 2.82 P+15/64% %P+0.07
 CAN-PA Apr*14 43%Rel Conf+12/99%
 MS+9 F&L+11 DS+10 R+6

GEN-MARK STMATIC SANCHEZ PB
 HOUSAM134422312 *CVF*RDF*BYF*BLF*DPF
 EX-94-6YR-USA ST'12
 CAN-GEBV Apr*14 99%Rel GLPI+2174/99%
 KG M+706 F-11 %F-0.34 P+14 %P-0.09
 CAN-GEBV Apr*14 99%Rel Conf+13
LEWISDALE EASTSIDE GOLD AMAZE PB
 HOCANF7789807 *CVF*BYF*BLF*DPF ET
 VG-87-2YR-CAN 4*(6/14)
 02-04 305 9478 377 4.0 307 3.2
 365 10948 437 4.0 358 3.3
 BCA 236 253 240
 1 LACT: 13648 543 4.0 455 3.3 KG
 AVG BCA: M236(+48) F253(+44) P240(+49)
 3RD SR-2-YR 2008 ATLANTIC CHAMP.
 Progeny Data: 1EX 10VG 4GP 1G 0F
 15 DAUS ME AVG: 12862 487 3.8 391 3.0
 AVG BCA: M243 F250 P236

COMESTAR STORMATIC PB
 HOCANM6947936 *CVF*BLF ET
 EX-CAN EXTRA'02
GEN-MARK BW MAR WINNIE-ET PB
 HOUSAF131652910 ET
 EX-90-2E-USA GMD 1*(5/3)
BRAEDALE GOLDWYN PB
 HOCANM10705608 *CVF*BYF*BLF
 GP-84-8YR-CAN EXTRA'05 GM'12
STADACONA OUTSIDE ABEL PB
 HOCANF8077661
 VG-88-4YR-CAN 33*(15/150)
 03-03 305 14753 696 4.7 432 2.9
 365 16601 769 4.6 496 3.0
 BCA 317 407 292
 3 LACT: 48588 2017 4.2 1480 3.0 KG
 AVG BCA: M276(+73) F310(+97) P256(+52)
 1 Superior Lactation
 HM. ALL-ATLANTIC INT. 1-YR 2001
 1ST INT. CALF 2000 DRUMMOND
 Progeny Data: 11EX 24VG 3GP 0G 0F
 38 DAUS ME AVG: 13054 506 3.9 397 3.0
 AVG BCA: M247 F259 P240

EASTSIDE LEWISDALE CELEBRATION



Eastside Lewisdale G Perfect VG-88 1*
 2-02 365 12,519 kg 4.6% 3.2% (250-310-244) - Full Sister to Missy
 Dam

Eastside Lewisdale Gold Missy EX-95 2E 8*
 Supreme Champion *Royal* & WDE 2011
 Full Sister to the Dam

LEWISDALE EASTSIDE PRECISION

HOCANF12047701 ET B:2014 Jun 01
 CAN-PA Apr*14 PA LPI+2730
 KG M+1078 F+46 %F+0.05
 SCS 2.67 P+33 %P-0.03
 CAN-PA Apr*14 Conf+14
 MS+13 F&L+11 DS+8 R+7

Consigned by:
 LEWIS BROS
 Tel: 902-628-6549 Fax: 902-629-1558
 J. GUY THOMPSON & SON
 Tel: 902-629-5176 Fax: 902-892-2551

MR CHASSITY COLT 45-ET PB
 HOUSAM70476906 *POC*RDC*CVF*BYF*BLF ET
 CAN-GPA Apr*14 77%Rel GPA LPI+2453/73%
 KG M+995/74% F+9/35% %F-0.29
 SCS 2.75 P+25/64% %P-0.07
 CAN-GPA Apr*14 72%Rel Conf+13
 MS+13 F&L+8 DS+5 R+5

SANDY-VALLEY COLT P-RED-TW PB
 HOUSAM68731810 R&W *POC*CVF*BYF*BLF*DPF MB
 GMACE Apr*14 91%Rel GMLPI+2122/85%
 KG M+382 F-41 %F-0.55 P+19 %P+0.05
 GMACE Apr*14 85%Rel Conf+6

AGGRAVATION LAWN BOY P-RED PB
 HOUSAM133080890 R&W *POR*CVF*BYF*BLF*DPF
 EX-93-7YR-USA GM

SANDY-VALLEY-W B CRYSTAL-ET PB
 HOUSAF63114952 *RDC ET
 VG-86-2YR-USA

PICSTON SHOTLE-ET PB
 HOGBRM598172 *CVF*BYF*BLF*MFF ET
 EX-96-7YR-GBR EXTRA'09 GM'10

REGANCREST CINDERELLA PB
 HOUSAF61361673
 EX-92-2E-USA DOM GMD 6*(0/33)

EASTSIDE LEWISDALE G PERFECT PB
 HOCANF9725408 *CVF*BYF*BLF*DPF ET B:2008 Sep 02
 VG-88-5YR-CAN 1*(0/6)
 MS:89(FA:9 RAH:8 RAW:7) F&L:86 DS:89 R:85
 CAN-EBV Apr*14 74%Rel LPI+3006/58%
 KG M+1161/89% F+83/99% %F+0.39
 SCS 2.59 P+40/94% %P+0.02
 CAN-EBV Apr*14 54%Rel Conf+15/99%
 MS+12 F&L+14 DS+10 R+8
 02-02 305 10445 480 4.6 324 3.1
 365 12519 578 4.6 397 3.2
 BCA 250 310 244
 1 LACT: 15901 746 4.7 526 3.3 KG
 AVG BCA: M250(+41) F310(+80) P244(+36)
 Progeny Data: 0EX 3VG 1GP 0G 0F
 3 DAUS ME AVG: 11930 467 3.9 377 3.2
 AVG BCA: M225 F239 P228

REGANCREST S CHASSITY-ET PB
 HOUSAF62496899 *BYF*BLF ET
 EX-92-4YR-USA DOM GMD 10*(0/51)
 02-01 305 14470 629 4.3 474 3.3
 365 16638 711 4.3 541 3.3
 2 LACT: 47864 1988 4.2 1433 3.0 KG

BRAEDALE GOLDWYN PB
 HOCANM10705608 *CVF*BYF*BLF
 GP-84-8YR-CAN EXTRA'05 GM'12
 CAN-GEBV Apr*14 99%Rel GLPI+2630/99%
 KG M+232 F+45 %F+0.35 P+25 %P+0.16
 CAN-GEBV Apr*14 99%Rel Conf+11

STADACONA OUTSIDE ABEL PB
 HOCANF8077661
 VG-88-4YR-CAN 33*(15/150)
 02-02 305 9521 316 3.3 289 3.0
 BCA 238 214 228
 03-03 305 14753 696 4.7 432 2.9
 365 16601 769 4.6 496 3.0
 BCA 317 407 292
 04-06 305 13117 555 4.2 383 2.9
 BCA 272 308 247

3 LACT: 48588 2017 4.2 1480 3.0 KG
 AVG BCA: M276(+73) F310(+97) P256(+52)
 1 Superior Lactation
 HM. ALL-ATLANTIC INT. 1-YR 2001
 1ST INT.CALF 2000 DRUMMOND
 Progeny Data: 11EX 24VG 3GP 0G 0F
 38 DAUS ME AVG: 13054 506 3.9 397 3.0
 AVG BCA: M247 F259 P240

SHOREMAR JAMES PB
 HOCANM5902195 *CVF*BLF
 GP-81-2YR-CAN EXTRA'98

BRAEDALE BALER TWINE PB
 HOCANF6860888 *BLF ETM
 VG-86-2YR-CAN 33*(27/138)

COMESTAR OUTSIDE PB
 HOCANM6026421 *CVF*BLF ET
 EX-95-CAN EXTRA'98 GM'12

STADACONA PROGRESS ANIBEL PB
 HOCANF8002479
 VG-85-3YR-CAN 2*(10/0)
 04-03 305 15314 522 3.4 480 3.1
 365 17321 595 3.4 548 3.2
 BCA 295 272 293

8 LACT: 120719 4098 3.4 3770 3.1 KG
 AVG BCA: M264(+40) F241(+18) P256(+27)
 1 Super3, 3 Superior Lactations
 Progeny Data: 0EX 1VG 1GP 1G 0F
 3 DAUS ME AVG: 13981 555 4.0 418 3.0
 AVG BCA: M264 F284 P253

EASTSIDE LEWISDALE CELEBRATION



Eastside Lewisdale Gold *Missy* EX-95 2E 8*

Canadian Cow of the Year 2012

Sister to the Dam

EASTSIDE MISS MARISSA

HOCANF11137901 B:2012 Feb 01
 CAN-PA Apr*14 42%Rel PA LPI+2434/38%
 KG M+322/55% F+19/64% %F+0.07
 SCS 2.69 P+15/64% %P+0.04
 CAN-PA Apr*14 37%Rel Conf+14/99%
 MS+9 F&L+12 DS+13 R+10

Fresh July 4, 2014

Consigned by:
 J. GUY THOMPSON & SON
 Tel: 902-629-5176 Fax: 902-892-2551

LIRR DREW DEMPSEY PB

HOUSAM61083609 *CVF*PDF*BYF*BLF*DPF
 VG-86-4YR-USA EXTRA*11
 CAN-GEV Apr*14 98%Rel GLPI+2864/95%
 KG M+121/29% F+38/75% %F+0.32
 SCS 2.59 P+30/73% %P+0.22
 CAN-GEV Apr*14 96%Rel Conf+18/99%
 MS+14 F&L+14 DS+14 R+8
 Progeny Data: 1743 Daus: 86% GP+
 6EX 290VG 1203GP 240G 4F
 906 DAUS ME AVG: 11293 443 3.9 359 3.2
 AVG BCA: M213 F227 P217

BRAEDALE GOLDWYN PB

HOCANM10705608 *CVF*BYF*BLF
 GP-84-8YR-CAN EXTRA*05 GM*12
 CAN-GEV Apr*14 99%Rel GLPI+2630/99%
 KG M+232 F+45 %F+0.35 P+25 %P+0.16
 CAN-GEV Apr*14 99%Rel Conf+11
KERNDT SNEEZY DERRY DREW PB
 HOUSAF207658039
 VG-88-5YR-USA
 03-08 305 12415 464 3.7 395 3.2
 365 14130 540 3.8 460 3.3
 3 LACT: 51044 2008 3.9 1650 3.2 KG

SHOREMAR JAMES PB

HOCANM5902195 *CVF*BLF
 GP-81-2YR-CAN EXTRA*98
BRAEDALE BALER TWINE PB
 HOCANF6860888 *BLF ETM
 VG-86-2YR-CAN 33*(27/138)
REGANCREST EMORY DERRY-ET PB
 HOUSAM2300873 *CVF*BLF ET
 EX-94-4YR-USA GM ST*05

KERNDT MATTIE SNEEZY-ET PB

HOUSAF207128837 ET
 EX-90-5YR-USA

EASTSIDE LEWISDALE ARIZONA PB

HOCANF8959788 ET B:2007 Sep 08
 VG-88-3YR-CAN
 MS:87(FA:7 RAH:7 RAW:8) F&L:88 DS:91 R:86
 CAN-EBV Apr*14 70%Rel LPI+2009/57%
 KG M+523/65% F-1/33% %F-0.19
 SCS 2.79 P+0/35% %P-0.14
 CAN-EBV Apr*14 51%Rel Conf+11/98%
 MS+5 F&L+10 DS+13 R+11
 02-00 305 8364 306 3.7 260 3.1
 BCA 213 208 206
 03-02 305 12026 452 3.8 348 2.9
 321 12474 469 3.8 362 2.9
 BCA 253 258 229
 04-04 305 10469 355 3.4 309 3.0
 BCA 205 190 193
 3 LACT: 33814 1226 3.6 1021 3.0 KG
 AVG BCA: M224(+22) F219(-5) P209(+7)
 HM. ALL-ATLANTIC 4-H SR.CALF 2008
 2ND SR.CALF 2008 ATLANTIC SPRING
 3RD SR.CALF 2008 ATLANTIC SUMMER
 3RD CALF 2008 ON DISCOVERY

OSEANA ASTRONOMICAL-ET PB

HOUSAM129355919 *CVF*BLF ET
 EX-95-CAN ST*04
 CAN-GEV Apr*14 99%Rel GLPI+1198/99%
 KG M-623 F-64 %F-0.40 P-21 %P-0.01
 CAN-GEV Apr*14 99%Rel Conf+3
STADACONA OUTSIDE ABEL PB
 HOCANF8077661
 VG-88-4YR-CAN 33*(15/150)
 02-02 305 9521 316 3.3 289 3.0
 BCA 238 214 228
 03-03 305 14753 696 4.7 432 2.9
 365 16601 769 4.6 496 3.0
 BCA 317 407 292
 04-06 305 13117 555 4.2 383 2.9
 BCA 272 308 247
 3 LACT: 48588 2017 4.2 1480 3.0 KG
 AVG BCA: M276(+73) F310(+97) P256(+52)
 1 Superior Lactation
 HM. ALL-ATLANTIC INT. 1-YR 2001
 1ST INT.CALF 2000 DRUMMOND
 Progeny Data: 11EX 24VG 3GP 0G 0F
 38 DAUS ME AVG: 13054 506 3.9 397 3.0
 AVG BCA: M247 F259 P240

ROBTHOM INTEGRITY-ET PB

HOUSAM2150948 *CVF*BLF ET
 EX-96-11YR-USA EXTRA*99 GM
TRI-DAY ASHLYN-ET PB
 HOUSAF17181481 ET
 EX-96-2E-USA DOM GMD 13*(0/65)
COMESTAR OUTSIDE PB
 HOCANM6026421 *CVF*BLF ET
 EX-95-CAN EXTRA*98 GM*12
STADACONA PROGRESS ANIBEL PB
 HOCANF8002479
 VG-85-3YR-CAN 2*(10/0)
 04-03 305 15314 522 3.4 480 3.1
 365 17321 595 3.4 548 3.2
 BCA 295 272 293
 8 LACT: 120719 4098 3.4 3770 3.1 KG
 AVG BCA: M264(+40) F241(+18) P256(+27)
 1 Super3, 3 Superior Lactations
 Progeny Data: 0EX 1VG 1GP 1G 0F
 3 DAUS ME AVG: 13981 555 4.0 418 3.0
 AVG BCA: M264 F284 P253

EASTSIDE LEWISDALE CELEBRATION



Eastside Lewisdale Gold *Missy* EX-95 2E 8*

Canadian Cow of the Year 2012

Sister to the 2nd Dam



WALKERVILLE LADY DEBBY

HOCANF11672358 B:2013 Mar 23
 CAN-GPA Apr*14 76%Rel GPA LPI+2658/74%
 KG M+623/70% F+38/75% %F-0.09
 SCS 2.66 P+28/84% %P+0.06
 CAN-GPA Apr*14 73%Rel Conf+16/99%
 MS+12 F&L+14 DS+13 R+8

4th Maternal Dam
 STADACONA PROGRESS ANIBEL VG-85-3YR-CAN 2*

Consigned by:
 WALKERVILLE FARM LTD
 Tel: 506-433-6938
 SEAN D. MOFFETT
 Tel: 506-433-6132

LIRR DREW DEMPSEY PB

HOUSAM61083609 *CVF*RDF*BYF*BLF*DPF
 VG-86-4YR-USA EXTRA'11
 CAN-GEBV Apr*14 98%Rel GLPI+2864/95%
 KG M+121/29% F+38/75% %F+0.32
 SCS 2.59 P+30/73% %P+0.22
 CAN-GEBV Apr*14 96%Rel Conf+18/99%
 MS+14 F&L+14 DS+14 R+8
 Progeny Data: 1764 Daus: 86% GP+
 6EX 293VG 1218GP 243G 4F
 906 DAUS ME AVG: 11293 443 3.9 359 3.2
 AVG BCA: M213 F227 P217

BRAEDALE GOLDWYN PB

HOCANM10705608 *CVF*BYF*BLF
 GP-84-8YR-CAN EXTRA'05 GM'12
 CAN-GEBV Apr*14 99%Rel GLPI+2630/99%
 KG M+232 F+45 %F+0.35 P+25 %P+0.16
 CAN-GEBV Apr*14 99%Rel Conf+11
KERNDT SNEEZY DERRY DREW PB
 HOUSAF207658039
 VG-88-5YR-USA
 03-08 305 12415 464 3.7 395 3.2
 365 14130 540 3.8 460 3.3
 3 LACT: 51044 2008 3.9 1650 3.2 KG

SHOREMAR JAMES PB

HOCANM6947936 *CVF*BLF
 GP-81-2YR-CAN EXTRA'98
BRAEDALE BALER TWINE PB
 HOCANF6860888 *BLF ETM
 VG-86-2YR-CAN 33*(27/138)
REGANCREST EMORY DERRY-ET PB
 HOUSAM2300873 *CVF*BLF ET
 EX-94-4YR-USA GM ST'05

KERNDT MATTIE SNEEZY-ET PB

HOUSAF207128837 ET
 EX-90-5YR-USA

ROYRIDGE LADY A PB

HOCANF11314742 ET B:2011 Mar 26
 VG-86-2YR-CAN
 MS:85(FA:6 RAH:7 RAW:8) F&L:88 DS:86 R:85
 CAN-GEBV Apr*14 77%Rel GLPI+2489/75%
 KG M+1732/97% F+32/81% %F-0.28
 SCS 2.89 P+29/85% %P-0.24
 CAN-GEBV Apr*14 74%Rel Conf+12/99%
 MS+8 F&L+10 DS+11 R+7
 01-11 305 12733 424 3.3 346 2.7
 345 14035 468 3.3 383 2.7
 BCA 333 301 284
 1 LACT: 14035 468 3.3 383 2.7 KG
 AVG BCA: M333(+90) F301(+48) P284(+56)

GEN-MARK STMATIC SANCHEZ PB

HOUSAM134422312 *CVF*RDF*BYF*BLF*DPF
 EX-94-6YR-USA ST'12
 CAN-GEBV Apr*14 99%Rel GLPI+2174/99%
 KG M+706 F-11 %F-0.34 P+14 %P-0.09
 CAN-GEBV Apr*14 99%Rel Conf+13
EASTSIDE LEWISDALE S AMBER PB
 HOCANF7966346 ET
 VG-87-4YR-CAN 1*(3/3)
 02-05 305 10826 365 3.4 329 3.0
 321 11330 385 3.4 346 3.1
 BCA 260 237 249
 03-05 305 12381 403 3.3 353 2.9
 BCA 263 233 237
 05-01 305 11928 404 3.4 352 3.0
 BCA 222 202 208
 06-09 305 11941 450 3.8 340 2.8
 BCA 236 242 214
 4 LACT: 59850 2107 3.5 1799 3.0 KG
 AVG BCA: M245(+42) F229(+27) P227(+24)
 Progeny Data: 0EX 2VG 2GP 0G 0F
 4 DAUS ME AVG: 13434 472 3.5 393 2.9
 AVG BCA: M254 F242 P237

COMESTAR STORMATIC PB

HOCANM6947936 *CVF*BLF ET
 EX-CAN EXTRA'02
GEN-MARK BW MAR WINNIE-ET PB
 HOUSAF131652910 ET
 EX-90-2E-USA GMD 1*(5/3)
PICSTON SHOTTE-ET PB
 HOGBRM598172 *CVF*BYF*BLF*MFF ET
 EX-96-7YR-GBR EXTRA'09 GM'10
STADACONA OUTSIDE ABEL PB
 HOCANF8077661
 VG-88-4YR-CAN 33*(15/150)
 03-03 305 14753 696 4.7 432 2.9
 365 16601 769 4.6 496 3.0
 BCA 317 407 292
 3 LACT: 48588 2017 4.2 1480 3.0 KG
 AVG BCA: M276(+73) F310(+97) P256(+52)
 1 Superior Lactation
 HM. ALL-ATLANTIC INT. 1-YR 2001
 1ST INT. CALF 2000 DRUMMOND
 Progeny Data: 11EX 24VG 3GP 0G 0F
 38 DAUS ME AVG: 13054 506 3.9 397 3.0
 AVG BCA: M247 F259 P240

EASTSIDE LEWISDALE CELEBRATION



Nobi Fletcher

Red Oak Sanchez *Odyssey* VG-86 1Yr

Junior Champion Atlantic Spring Show 2012 ^{2nd} & 2-Yr-Old Maxville Spring 2013

Same Family



RED OAK ATWOOD OREILLY

HOCANF11628478 B:2012 Sep 11
 VG-87-1YR-CAN
 MS:87(FA:7 RAH:8 RAW:7) F&L:87 DS:88 R:86
 CAN-GPA Apr*14 76%Rel GPA LPI+2429/74%
 KG M+856/80% F+31/80% %F+0.00
 SCS 2.93 P+21/74% %P-0.06
 CAN-GPA Apr*14 74%Rel Conf+14/99%
 MS+12 F&L+13 DS+12 R+3

4th & 5th Maternal Dam
 WESTCOUNTRY OREO VG-85-5YR-CAN 2*
 WESTCOUNTRY MADELEINE VG-85-4YR-CAN

Consigned by:
 RED OAK FARMS
 Tel: 902-892-1020 Fax: 902-892-1972

Fresh June 6, 2014 - Bred July 31, 2014 to Doorman

Milking Yearling for 2014!

MAPLE-DOWNS-I G W ATWOOD PB

HOCANM8956379 *CVF*RDF*BYF*BLF*DPF ET
 EX-90-4YR-USA ST*12
 CAN-GEBV Apr*14 98%Rel GLPI+2843/97%
 KG M+522/49% F+62/93% %F+0.41
 SCS 2.93 P+27/68% %P+0.09
 CAN-GEBV Apr*14 97%Rel Conf+17/99%
 MS+17 F&L+19 DS+13 R-4
 Progeny Data: 1019 Daus: 91% GP+
 4EX 440VG 479GP 96G 0F
 911 DAUS ME AVG: 11931 471 3.9 376 3.2
 AVG BCA: M225 F241 P227

BRAEDALE GOLDWYN PB

HOCANM10705608 *CVF*BYF*BLF
 GP-84-8YR-CAN EXTRA'05 GM*12
 CAN-GEBV Apr*14 99%Rel GLPI+2630/99%
 KG M+232 F+45 %F+0.35 P+25 %P+0.16
 CAN-GEBV Apr*14 99%Rel Conf+11
MD-DELIGHT DURHAM ATLEE-ET PB
 HOUSAF131704103 ET
 EX-92-4YR-USA DOM GMD 7*(0/35)
 03-11 305 15286 869 5.7 492 3.2
 365 17368 948 5.5 567 3.3
 2 LACT: 35265 1746 5.0 1163 3.3 KG

SHOREMAR JAMES PB

HOCANM5902195 *CVF*BLF
 GP-81-2YR-CAN EXTRA'98
BRAEDALE BALER TWINE PB
 HOCANF6860888 *BLF ETM
 VG-86-2YR-CAN 33*(27/138)
REGANCREST ELTON DURHAM-ET PB
 HOUSAM2250783 *CVC*RDF*BLF ET
 EX-90-7YR-USA GM

MD-DELIGHT STRM AMBERLEE-ET PB
 HOUSAF128108550 ET
 VG-88-3YR-USA DOM

RED OAK MR SAM ORIOLE PB

HOCANF772238 B:2007 Mar 20
 VG-88-3YR-CAN 1*(6/0)
 MS:88(FA:7 RAH:9 RAW:8) F&L:87 DS:94 R:88
 CAN-EBV Apr*14 70%Rel LPI+1905/57%
 KG M+1309/92% F+11/20% %F-0.53
 SCS 3.00 P+12/58% %P-0.26
 CAN-EBV Apr*14 52%Rel Conf+8/93%
 MS+4 F&L+7 DS+8 R+11
 02-00 305 10129 298 2.9 292 2.9 Scs0.7
 BCA 264 210 239
 03-01 305 13344 392 2.9 376 2.8 Scs2.1
 BCA 297 238 263
 04-04 305 15847 452 2.9 424 2.7 Scs1.7
 351 16958 494 2.9 464 2.7
 BCA 331 254 277
 05-05 305 11906 398 3.3 338 2.8
 BCA 230 204 205
 06-09 P192 15129 439 2.9 390 2.6
 PBCA 272 215 227
 5 LACT: 65461 1980 3.0 1828 2.8 KG
 AVG BCA: M279(+49) F224(-9) P242(+14)
 Progeny Data: 0EX 3VG 0GP 0G 0F
 2 DAUS ME AVG: 14556 500 3.4 435 3.0
 AVG BCA: M275 F256 P263

REGANCREST-MR DRHAM SAM-ET PB

HOUSAM207184639 *CVF*RDF*BLF ET
 GM ST*08
 CAN-GEBV Apr*14 99%Rel GLPI+1947/99%
 KG M-182 F+17 %F+0.22 P+0 %P+0.05
 CAN-GEBV Apr*14 99%Rel Conf+7
RED OAK GIBSON OREO PB
 HOCANF8254680
 VG-88-5YR-CAN 1*(7/0)
 02-02 305 9132 291 3.2 260 2.8 Scs2.7
 BCA 228 197 205
 03-04 305 12089 405 3.4 368 3.0 Scs0.7
 309 12203 410 3.4 372 3.0
 BCA 264 241 252
 04-03 305 12565 449 3.6 385 3.1 Scs3.6
 BCA 250 243 244
 06-02 305 12255 468 3.8 363 3.0 Scs1.6
 BCA 227 236 217
 07-02 305 11530 409 3.5 341 3.0 Scs6.8
 BCA 216 210 205
 6 LACT: 71286 2511 3.5 2133 3.0 KG
 AVG BCA: M234(+4) F222(-9) P221(-11)
 Progeny Data: 0EX 2VG 0GP 0G 0F
 2 DAUS ME AVG: 14367 444 3.1 407 2.8
 AVG BCA: M271 F227 P246

REGANCREST ELTON DURHAM-ET PB
 HOUSAM2250783 *CVC*RDF*BLF ET
 EX-90-7YR-USA GM

SHER-EST EMORY SWANNY PB
 HOUSAF17037800 *CVF
 EX-90-2E-USA DOM 2*(0/10)

SILKY GIBSON PB
 HOCANM6215479 *BYC*CVF*BLF ET
 EX-96-CAN ST*99

WESTCOUNTRY LAUGAN FUDGE PB

HOCANF8154540 MB
 GP-80-2YR-CAN 2*(10/0)
 01-10 299 7026 207 2.9 210 3.0
 BCA 186 148 175
 4 LACT: 28129 763 2.7 817 2.9 KG
 AVG BCA: M169(-38) F130(-76) P157(-55)
 Progeny Data: 0EX 2VG 0GP 0G 0F
 2 DAUS ME AVG: 12968 442 3.4 386 3.0
 AVG BCA: M245 F227 P234